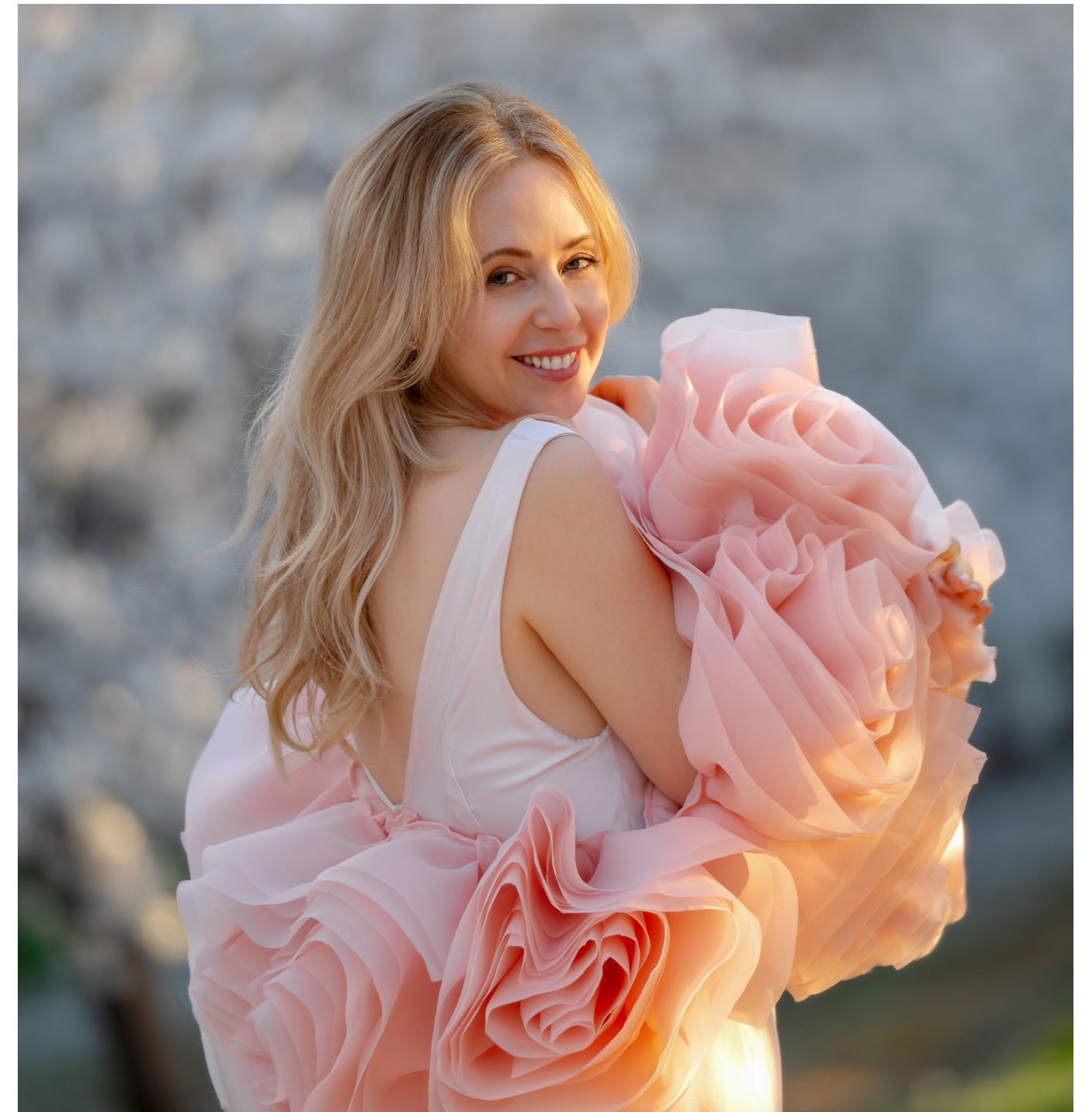




ALINA.

ALINAZ.COM

HOW TO
CREATE THE
STYLE YOU ARE
MEANT FOR





ALINAZ.COM

How you look, act and talk
creates your world





ALINAZ.COM

It is 70% of how you look like,
20% how you speak and 10% of what you say

&

The world sees us through color and shapes.



ALINAZ.COM

What are archetypes?

Archetypes are timeless patterns within the collective unconscious, residing deep within our psyche. They shape how we experience the world—our values, instincts, and responses to life's events.

These unconscious programs operate beneath the surface, yet they impact every part of our lives. By recognizing your unique archetypal patterns, you can bring them into awareness and shape your destiny consciously.

As you explore these archetypes, remember to use discretion, stay grounded, and always act in ways that are safe for yourself and others.



THE INNOCENT

To Embody the Innocent Archetype

Tap into a sense of **lightness, playfulness, and pure joy**. This is the energy of carefree laughter, spontaneous friendship, childlike wonder, and an unshakable trust that the world is a safe and magical place.

How to Dress the Part:

Opt for **light, pastel clothes**, playful patterns, and whimsical pieces like **graphic tees with innocent or nostalgic motifs**. Think carefree and comfy, like your inner child just got invited to a party.





THE EVERYPERSON

This archetype thrives on **belonging, comfort, and connection**. It's all about cozy vibes, shared laughter, and the simple joy of being part of a group. Life doesn't have to be dramatic to be meaningful—just shared.

How to Dress the Part:

Reach for your **comfiest favorites**—hoodies, joggers, sneakers, or fuzzy slippers. Think relaxed and approachable: soft fabrics, cozy layers, and a lived-in feel that says, "I belong here."





THE HERO

To Embody the Hero Archetype

Step into your **strength, courage, and discipline**. This is the energy of rising to the challenge, protecting others, and proving—to yourself and the world—that you are powerful and capable.

How to Dress the Part:

Choose bold, structured looks. Think **leather accessories, utility belts, athletic wear, big watches**, and clean lines. Go for **strong contrasts**: darks with flashes of red, white, or metallics. Look like the warrior you are becoming.





THE CAREGIVER

To Embody the Caregiver Archetype

Channel the energy of warmth, kindness, and quiet strength. The Caregiver brings a sense of safety, softness, and sincere generosity. This archetype nourishes others emotionally and physically—while remembering to care for herself too.

How to Dress the Part:

Wear **simple, modest outfits** that feel like comfort itself. Think soft textures, loose knits, and colors that feel like honey and chamomile tea. You don't need luxury—just warmth, calm, and authenticity.





THE EXPLORER

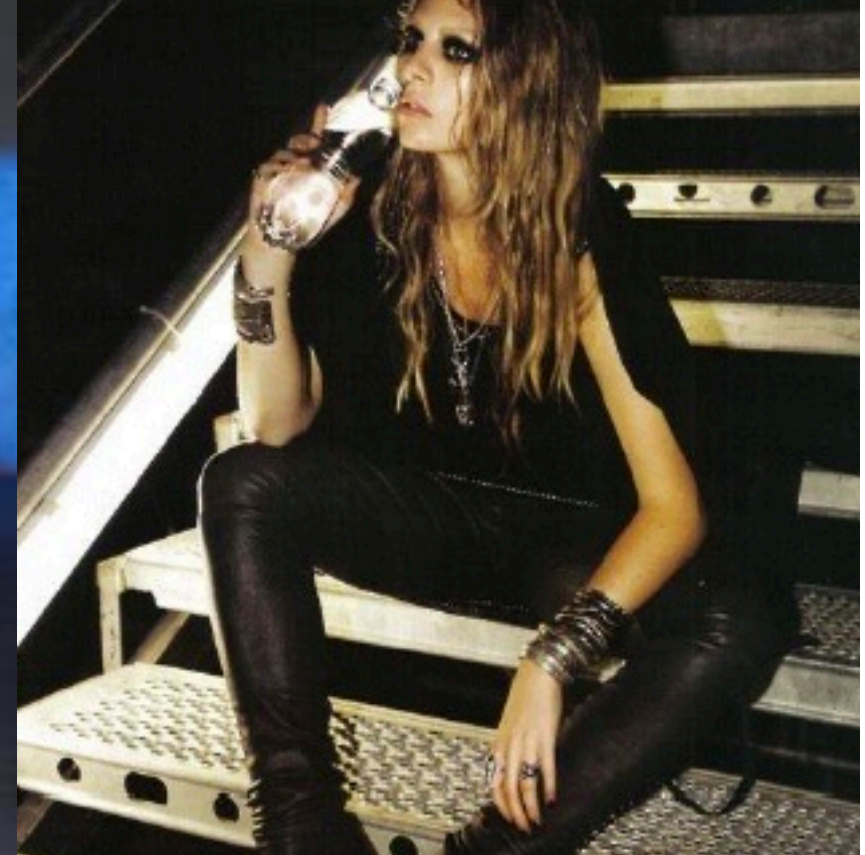
To Embody the Explorer Archetype

Live life with open skies and untamed wonder. The Explorer seeks authenticity, adventure, and freedom. You crave new places, new ideas, and the thrill of discovering something that awakens your soul.

How to Dress the Part:

Think **adventurer meets effortless chic**. Go for wide-brimmed hats, trench coats, camo prints, hiking boots, and flowing scarves. Mix dusty hues like khaki, sand, gray, and animal prints. Every piece should look like it has a story.





THE REBEL

To Embody the Rebel Archetype

This archetype is all about **breaking the rules, provoking change, and expressing radical freedom**. The Rebel doesn't ask for permission—they rewrite the script. Expect disruption, bold statements, and unapologetic truth.

How to Dress the Part:

Layer on the leather, mix dark denim with metallics, add bold accessories like chokers or heavy rings. Let your look say: *I don't fit in—and that's the point.*





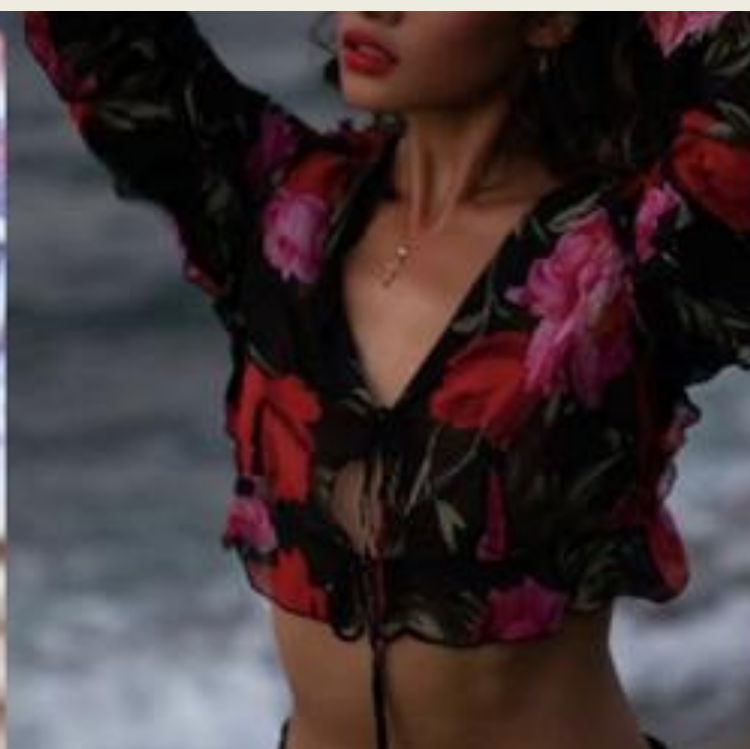
THE LOVER

To Embody the Lover Archetype

Step into a world of beauty, sensuality, and deep appreciation. The Lover seeks intimacy, pleasure, and connection—whether through relationships, art, or everyday indulgences. This archetype lives in full color and unapologetic passion.

How to Dress the Part:

Adorn yourself in **silks, lace, satins, and soft romantic fabrics**. Choose rich reds, blush pinks, burgundy, gold, or black. Add luxurious accessories—pearls, perfume, a swipe of lipstick. Walk like love itself.





THE ARTIST

To Embody the Artist Archetype

Tune into the power of imagination, originality, and soulful expression. The Artist lives to create beauty, meaning, and something that's never existed before. This archetype plays with form, breaks convention, and finds inspiration in the everyday.

How to Dress the Part:

Forget the rules. Dress like a walking canvas. Embrace **color, texture, and asymmetry**. Layer vintage finds with handmade accessories. Let every outfit say: *I make the world more beautiful just by being me.*





THE RULER

To Embody the Ruler Archetype

Step into your **sovereignty, structure, and command**. The Ruler archetype thrives on creating order, establishing legacy, and guiding others with calm authority. You are here to lead with vision and elegance.

How to Dress the Part:

Wear tailored, statement-making pieces—**structured blazers, bold belts, polished shoes, gold accents**, and luxe handbags. Stick to **rich, solid colors** like navy, ivory, camel, or jewel tones. You don't chase trends—you embody timeless power.





THE MAGICIAN

To Embody the Magician Archetype

Channel your **power to transform, transmute, and manifest**. The Magician sees beyond the surface, weaves dreams into reality, and turns chaos into alchemy. You don't just witness change—you *are* the change.

How to Dress the Part:

Embrace the mystic. Choose **flowing fabrics, celestial patterns, velvet, chokers, layered rings, and dramatic silhouettes**. Play with dark and iridescent shades—plum, emerald, navy, midnight black, or cosmic metallics. You are the spell in motion.





THE SAGE

To Embody the Sage Archetype

Step into your role as the **seeker of truth and wisdom**. The Sage observes, contemplates, and understands.

This archetype thrives in solitude, depth, and clarity. You are not here to impress—you're here to *know*.

How to Dress the Part:

Go for **clean lines, natural fabrics, and muted tones**—think ivory, greige, charcoal, and soft browns. Wear **simple, timeless silhouettes** and minimal jewelry. Your look should whisper intelligence and quiet confidence.





THE JESTER

To Embody the Jester Archetype

Step into the energy of **joy, play, and presence**. The Jester reminds us to not take life too seriously—to laugh, to experiment, and to surprise ourselves. This archetype heals with humor and dances with chaos.

How to Dress the Part:

Mix prints, clash colors, wear things “wrong” on purpose. Think **bold, outrageous, maximalist**. Bright pink with lime green? Go for it. Polka dots with glitter shoes? Even better. The Jester isn't here to match—she's here to *move the energy*.





ALINAZ.COM

TO CONTINUE YOUR JOURNEY TO
YOUR DREAM SELF, CHECK OUT MY
BOOK **12 SELVES** AT
[ALINAZ.COM/BOOKS](https://alinz.com/books)

